



November 2020 Issue

Judi Leatherberry, Editor



## President's Message

We had a great meeting October 10th at Judy Jull's home. Member Sandra Jordan and her husband, Terry, presented their specialty, Weaving with Gourds. We each received a gourd customized by Terry to try weaving on them. Sitting under the trees in a gentle breeze weaving and chatting together was delightful, the kind of respite we all crave after a long, lonely summer. We missed you if you were not able to join us; but I can see us doing something like that again.

Our Fort Caroline Community Center gift project was unveiled during the meeting. It is stunning! You recall last year the Guild conducted a contest among members to design a woven gift for us to create and hang on the new white wall in the lobby. There were four worthy contenders. Our members voted to use Nan Miller's design. It is of three separate woven panels in grey, silver and black. Each panel has three sections warped in the six primary and secondary colors. All the sections on one panel are warped alike but treadled differently. One goal of the project was to involve as many members as possible. Susan Wallace spearheaded the project and to accomplish that objective she designed a method that utilized no fewer than 12 weavers weaving, 5 weavers measuring, 6 weavers dressing a loom, and one weaver hand finishing all the panels. She invited everyone to join in weaving the panels. The coordination bordered on the miraculous. Some looms traveled house to house and some weavers traveled loom to loom. Meanwhile, Susan made it look like a dance that moved smoothly and quickly. The finished product is one we can all be proud of. Our thanks to all those who participated and especially to Susan Wallace. This had to be a labor of love. (See picture below.)

We will present our gift to the Community Center when it reopens; meanwhile, the panels are hanging outside ReddiArts' gallery welcoming visitors to our exhibit which opened November 2<sup>nd</sup>. Gail Karson and crew spent Halloween setting up the gallery to display your wonderful woven treasures. The exhibit is very colorful, quite varied and just in time for Holiday shopping. Visit and see it soon before it is all picked over. (We will be restocking as necessary, so call Gail to arrange for displaying your additional items as soon as available.)

As the Community Center remains closed, we will continue to have meetings when possible to do so safely. As

the reopening date may be farther away than we would like, the Guild is considering optional, temporary sites for holding our meetings. If you know of a facility that could accommodate us for a monthly meeting, please let Kathy Bowles or me know so that we can consider it. Thank you.

Ann Wingate  
President



## Upcoming Programs

- November 14, 2020** Weaving Christmas cards (More info to follow)
- December 12, 2020** Christmas Cookies – name drafting
- January 9, 2021** Double width weaving
- February 13, 2021** Members' sale – yarn and equipment
- March 13, 2021** Piecing handwoven fabrics- Susan Wallace & Judy Jull
- April 10, 2021** Weaving transparencies – Lori Harlow
- May 8, 2021** Annual Joint guild Picnic

# "Weave It Alone" at ReddiArts

We are up and running at ReddiArts. Congratulations to Susan Wallace who sold a piece while we were unpacking.

Thank you all to those who participated with their items and those that help setup. ReddiArts will be advertising the show.....they are very impressed! Also, ReddiArts will be glad to sell online and do curbside pickup.

Pauline and Connie will be updating our FaceBook and Web page. Make sure you all share with your friends online.

We are still not sure whether our show will end in November or December. I'll keep you posted. If you want to add items to the show, you will need to fill a contract out, tag your items and let Susan Wallace or me know.

Here's to our Fantastic Guild and a wonderful show!

Gail Karson



## Here's a Small Preview of the Show!





**For more beautiful weaving, go to ReddiArts!**



### **Around the Internet...**

Submitted by Susan Wallace, Judi Leatherberry, and Ann Wingate

Indigenous peoples of the Pacific Northwest once bred dogs in large numbers and sheared them for wool.

<https://tinyurl.com/y2yem4tx>

<https://www.youtube.com/watch?v=aiKYnPT72Uo&feature=youtu.be> Why Weaving is More Important Than Ever by Kelly Casanova

[https://www.opb.org/article/2020/10/01/zapotec-weaving-tradition-is-alive-in-sandy/?mc\\_cid=057fe01f13&mc\\_eid=cf1343c58c](https://www.opb.org/article/2020/10/01/zapotec-weaving-tradition-is-alive-in-sandy/?mc_cid=057fe01f13&mc_eid=cf1343c58c) Francisco Bautista Weaving

[https://www.furniturelightingdecor.com/valdese-weavers-partners-seaqual-marine-plastic-upcycled-textiles?mc\\_cid=057fe01f13&mc\\_eid=cf1343c58c](https://www.furniturelightingdecor.com/valdese-weavers-partners-seaqual-marine-plastic-upcycled-textiles?mc_cid=057fe01f13&mc_eid=cf1343c58c) Valdese Weavers Partners with Seaqual on Marine Plastic Upcycled Textiles

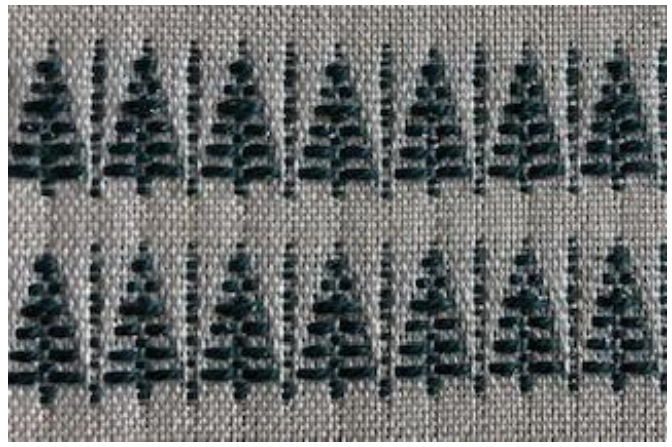
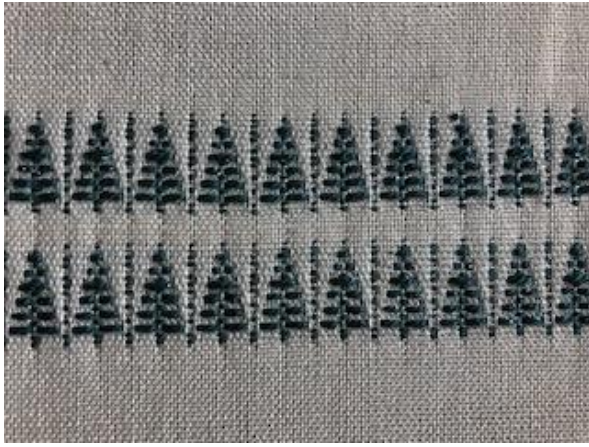


### **November Program by Judy Jull**

It seems as though every year someone suggests a program on weaving Christmas cards like the Guild did in its early years. So, what better way to celebrate our 46th anniversary as a Guild than to return to the past.

The program will present drafts and directions for both 4 harness and eight harness looms and a list of materials to use for warp and weft. If you do not want to make your own window cards and envelopes, I suggest that you purchase them first so that you can center your design in the window. I purchased window cards and envelopes at Hobby Lobby that had windows measuring 4.5" w x 3" h. (See the next page for a picture of what you'll be weaving.)

Judy



Trees for the Christmas cards.



**Pictures of the October Program--*Weaving on Gourds* by Sandra Jordan**



Weavers hard at work on their gourds!



Lots of weaving was done on these beautiful gourds!

# Something of Interest to All of Our Spinners!

Submitted by Judi Leatherberry  
Source: Carmaj Fiber Arts

## What does crimp size or wool grade have to do with the spin?

Merino  
classified as  
a fine grade wool  
~14 crimps per inch



Romney  
classified as  
a coarse grade wool  
~5 crimps per inch



See the crimp size? This gives you a clue of what grade the wool is. The smaller, finer and lower amplitude of the crimp the finer the grade. The more distance between crimps and the higher the amplitude of the crimp the more coarse the wool.

This also gives you a guide of how the wool can be spun. The finer the crimp, the finer the spin. The larger the crimp lends nicely to bulky spun yarn.

To spin thin use a faster whorl size (smaller in diameter) and draft small amounts of fiber.  
To spin a bulkier yarn use a slower whorl size (larger in diameter) and draft a larger amount of fiber.

*NOTE:* Crimps per inch can vary from sheep to sheep within the same breed and even within a fleece.

by Mary Egbert - Carmaj Fiber Arts

# Show and Tell Pictures

Ann Wingate



Left to Right: Gradient Pillow, Close-up of Pillow, and Finished Gourd from October Workshop

Jackie Simms



Left to Right: Inkle band, Supplies in her handmade basket, and another inkle band



Jackie's handmade Inkle Loom



Judi Leatherberry



Finished gourd from October Workshop

Le Anne Brown



A set of beautiful towels

Larry Berger



Larry's beautiful shawl seen in full sun and in the shade

Pauletta Berger



Beautifully woven rag rugs on the left, and a wonderful scarf on the right

Rudell Kopp



The warp is a combination of 2 Blazing Shuttles 8/2 cotton dyed warps, Autumn Mead & Autumn Leaves & the weft is 8/2 tencel Red Purple. The 8-S draft is #315-1 from Stricklers book.